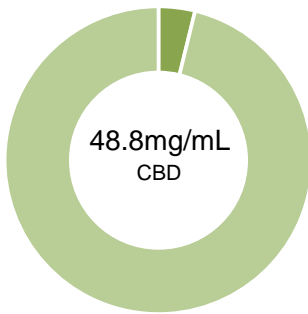


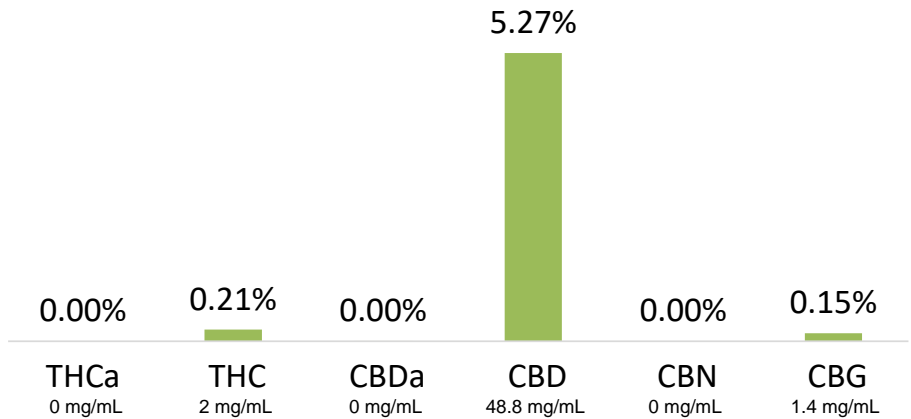
CLX 0337

Batch ID:	N/A	Test ID:	4989927.001
Reported:	17-Oct-2018	Method:	TM01
Type:	Solution		
Test:	Potency		

CANNABINOID PROFILE



- Total Potential THC 2mg/mL **
- Total Potential CBD 48.8mg/mL**



** Total Potential THC/CBD is calculated using the following formulas to take into account the loss of a carboxyl group during decarboxylation step.


Total THC = THC + (THCa *(0.877)) and Total CBD = CBD + (CBDa *(0.877))

% = % (w/w) = Percent (Weight of Analyte / Weight of Product)

NOTES:

Free from visual mold, mildew, and foreign matter.
Density = 0.925g/mL

FINAL APPROVAL


Sam Smith
17-Oct-2018
7:51 AM


David Green
17-Oct-2018
8:31 AM

PREPARED BY / DATE

APPROVED BY / DATE

Testing results are based solely upon the sample submitted to Botanacor Services, LLC, in the condition it was received. Botanacor Services, LLC warrants that all analytical work is conducted professionally in accordance with all applicable standard laboratory practices using validated methods. Data was generated using an unbroken chain of comparison to NIST traceable Reference Standards and Certified Reference Materials. This report may not be reproduced, except in full, without the written approval of Botanacor Services, LLC. ISO/IEC 17025:2005 Accredited A2LA Certificate Number 4329.02



Certificate #4329.02